



# **Black Environment Network**

*Working for full ethnic participation in the built and natural environment*

## **Annual Report**

**2008 - 2009**

*and plans for the future*

*BEN uses the word 'black' symbolically recognising that the black communities are the most visible of all ethnic communities. We work with black white and other ethnic communities*

## **Contents**

<b>The Director's Report</b>	1
<b>About BEN</b>	2
<b>The Progress of BEN</b>	
▪ BEN Network UK	6
▪ Publications and Resources	6
▪ Latest Publications	6
▪ Highlighting Ethnic Environmental Participation	7
▪ Consultations and Associations	7
▪ The Ethnic Minorities Award Scheme	8
▪ The BEN Network Conference	8
▪ Influencing and developing Policy. Advisory Groups	9
▪ Consultancy and Training	10
▪ Projects in England	10
▪ Projects in Wales	10
▪ Projects in Scotland	12
▪ Summary of BEN Projects 08/09 and 09/10	13
<b>Appendix</b>	
• The BEN Network Conferences - Highlights	14
• Accounts and Balance Sheet	16

## **Director's Report – 2008/09**

### ***Influencing policy and action for social inclusion at the highest level***

Black Environment Network (BEN) continues to be a major voice for social inclusion. Our contribution includes working on the DCMS Historic Environment Review Executive Committee and Engaging Places National Advisory Group, the Countryside Council for Wales' Race Equality Action Plan Group, the Scottish Museums Council National Access and Learning Steering Group, and the World Commission for Protected Areas Task Force for Cities and Protected Cities.

### ***Opening up the historic and natural environment***

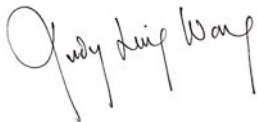
The Manchester Ethnic Environmental Participation Project England continues to build the capacity of ethnic minority community groups through direct support and a plethora of activities and partnerships. An example is "Intercultural Gardens – New Ways of Learning". This gave groups the experience of knowledge exchange, with key workers visiting 4 countries. The Discover Heritage Project in Scotland continues its national work of reaching out far afield, with significant work that linked some isolated groups to built and natural heritage experiences that are part of mainstream life. In Wales our portfolio of interlinked projects continue in North and South Wales. The North Wales Project significant opened up opportunities for minority youngsters through partnership work with the National Trust at Craflwyn. Groundbreaking work has begun with the Countryside Council for Wales to establish a scheme to open out volunteering shadowing and placements for ethnic minority groups. The publication of good practice case studies continues to be key to sharing methodology and inspiring further activities.

### ***Increasing actions for waste reduction, reuse and recycling***

The BEN Recycle Bike Project continues to grow, redistributing unwanted bikes. It also offers activities centered on bike rides, stimulating access to green spaces locally and further afield. It stands out among BEN projects in working with an integrated context, benefiting the white mainstream population as well as ethnic minorities. The project's physical presence as a workshop enables the ongoing development of working relationships in the neighbourhood, offering volunteering opportunities and acting as a hub for information and access to a range of opportunities for environmental activities.

### ***European and international work***

BEN's national and international reputation as the leader for ethnic environmental participation continues to grow. Presence in Europe has been a feature of the year. BEN made key contributions to European Heritage Days and spoke at the Council of Europe - European Heritage Forum Conference in Brussels. We continue to build on our natural arena - the 'local and global' context.



**Judy Ling Wong. FRSA. CBE. HonFCIWEM. HonPhD  
Director BEN**

***Black Environment Network (BEN) is the leader  
in the pioneering field of ethnic community  
environmental participation which it has created***

## **Why BEN?**

- Most agencies working in the natural and built environment pledge to be open to everyone, but until BEN highlighted the issue, ethnic participation has not been on their agenda.
- Many ethnic communities live in some of the worst environments. Participation in the built and natural environment can enable them to access the vast resources available in these sectors. In the process they may be empowered through gaining essential skills in self-help, self-representation and self-improvement - the effects of which spread into areas of life far beyond environmental involvement.
- Involving ethnic communities in environmental participation also means bringing forward a vast missing contribution from a significant section of the community to engage in the conservation, protection, and development of the built and natural environment.

***BEN consciously maintains a dialogue with  
those it serves. It has forged a working  
philosophy for involving ethnic communities  
that is relevant to their needs.***

## **Vital Needs and Concerns**

Putting ethnic community participation on the agenda

- The need for access to information, advice, resources and expertise, developmental support
- The need for developing a range of projects which integrate social, cultural and environmental concerns relevant to the specific needs of ethnic groups
- Highlighting the contribution of ethnic groups
- A training and consultancy service enables organisations to gain skills, and obtain advice and developmental support on how to open up their services and programmes of activities to ethnic groups

**For more information about BEN: [www.ben-network.org.uk](http://www.ben-network.org.uk)**

**BEN is a force for change, working to create a climate within  
which full ethnic participation in the built and natural  
environment can take place**

## **Key Achievements**

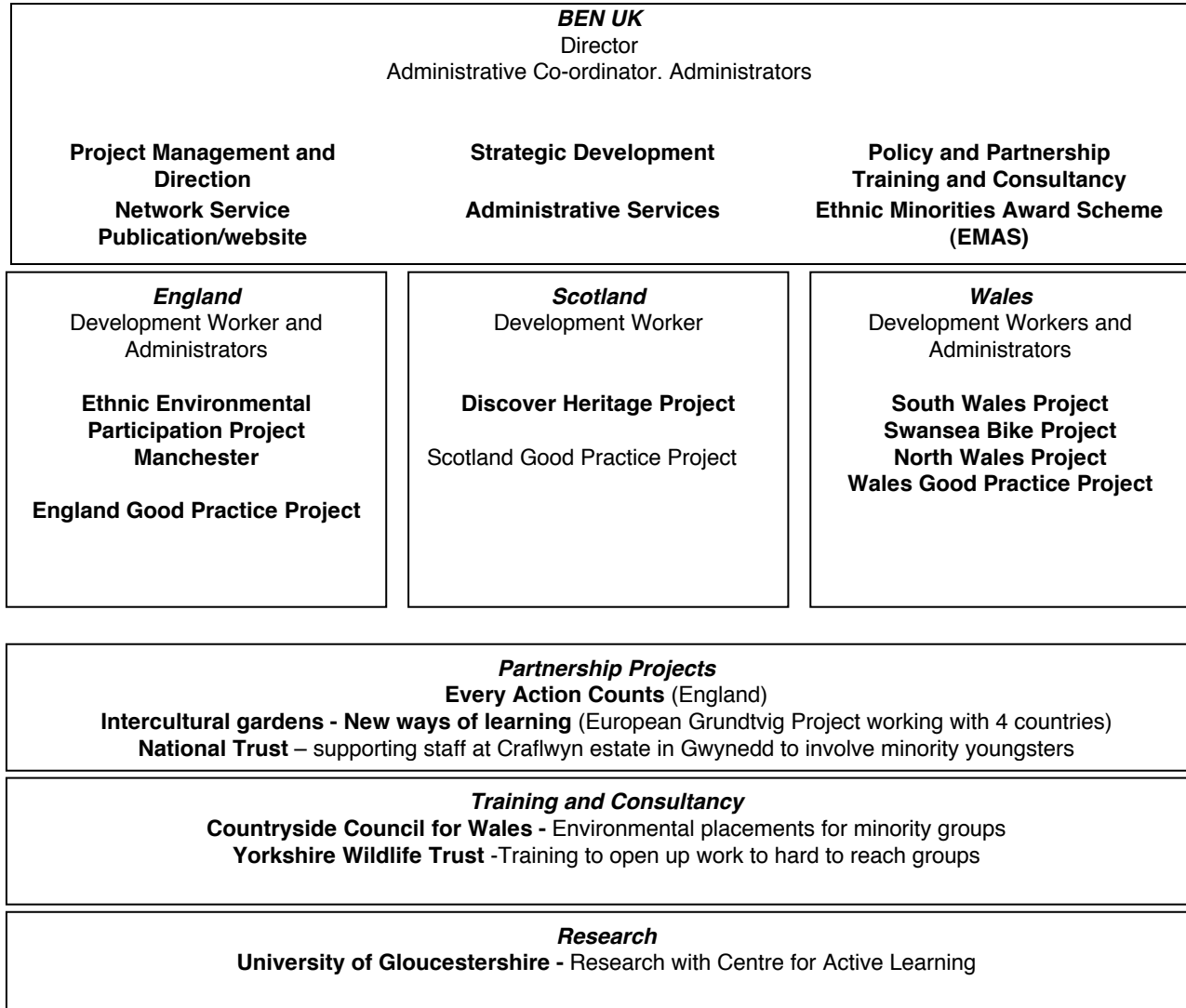
- BEN has put ethnic participation on the agenda
- We continue to make a major input to policy at the highest levels
- The BEN Network has an extensive network of over 500 members. The Network enables the vast and diverse pool of experience to be shared
- We handle an information and advice service, networking enquiries to expertise and resources.
- We publish resource materials and papers in order to promote models of good practice, highlight ethnic contribution, and fuel a cutting edge dialogue on ethnic participation.
- Conceptually we continue to be pioneers in forging relevant approaches to work effectively with ethnic groups. The BEN integrated approach of bringing together social, environmental and cultural concerns has been replicated throughout the country
- Innovative opportunities for ethnic participation are created nationally and internationally through partnership initiatives.
- Partnership and developmental projects are strategically forged to address issues and needs
- Our Training and Consultancy Service enables the environmental and heritage sectors to tap into the unique expertise drawn from the groundbreaking work of BEN.

### ***Major Current Themes for BEN***

***The Natural Environment    The Built Environment  
The Historic Environment    Sustainable Development  
Health, Well-being and the Environment  
Green and Open Spaces***

## BEN's Organisational Structure 08/09

Management Committee + BEN Advisors + BEN Network



## BEN Management Committee 04/05 and 08/09

	<b>Area of Contribution</b>	<b>Associated Organisation</b>	<b>Location</b>
<b>Richard Cuthbertson</b>	Historic Environment	National Trust	Wales
<b>Sukhbinder Johal</b>	Arts Culture and Regeneration	Culture East Midlands	Leicester
<b>Deepak Naik</b>	Equalities Communities of faith Hindu communities	Birmingham City Council	Birmingham
<b>Jane Trowell</b>	Community arts Ethical funding	Platform	London
<b>Abdul Ghaffar</b>	Youth Work	Birmingham City Council	Birmingham
<b>Malcolm Rigler</b>	Health	Individual	Hereford
<b>Christine Wildhaber</b>	Parks/Green Spaces	Southwark Council	London

### **BEN Advisors**

Beyond the expertise embodied by the BEN MC, BEN has a list of individuals who we can call on in order to have expert advice on other areas of development.

## BEN Network UK

The BEN Network brings together diverse interest groups around the theme of ethnic community environmental participation, including environmental organisations, ethnic community groups, individuals and groups from outdoor and higher education, students, local authorities, academics and so on. It is a network for development and support, sharing information and experience with a view to consolidating ethnic participation and creating new opportunities for ethnic community environmental participation.

### *For community based groups and individuals:*

- Signposting to expertise and resources.
- Referral to funding bodies.
- Grant application advice.
- Project outline advice.
- Briefing of environmental involvement to newcomers.
- Contacts for information and experience sharing.
- Project examples.

### *For environmental personnel:*

- Issues affecting ethnic groups.
- Contacts for information and experience sharing within the BEN Network.
- Project examples.
- Advice and signposting is based on the principal of initial and occasional advice, with an emphasis on the need for awareness and raising and training for skills to work effectively and relevantly with ethnic groups. They are therefore also introduced to the benefits of BEN Network membership and the range of services offered by the BEN Training and Consultancy Service.

## Publications and Resources

BEN publishes resources, papers and reports to share information and skills, promote good practice and highlight issues and concerns.

- Our website continues to develop services and new sections to service the BEN Network. Many downloadable items are in the Resources and Publications sections to share information, resources, reports and good practice with others.
- The BEN Information Pack continues to be sent out to all enquirers.
- BEN produces discussion papers promoting debate on current issues and concerns. Periodically significant articles and papers are brought together and published. See BEN website.
- Details of our work continue to be listed in community groups' newsletters, the information departments of local authority libraries and major national guides.
- Articles appear regularly in publications reaching diverse types of audiences.
- Particular aspects of the work of BEN appear on many websites belonging to other organisations. Type Black Environment Network to search.

### **Latest Publications**

All downloadable from our website, or email us for hard copies.

- 4 Good Practice Case Studies from Manchester
- 4 Good Practice Case Studies from Wales

## Highlighting Ethnic Environmental Participation

The theme of ethnic community environmental participation is constantly highlighted through the public presence of BEN in order to reinforce its significance on the agenda of organisations working for sustainable development.

### *Highlighting ethnic participation at Conferences, seminars and events:*

- Tyne and Wear Museums - Community Engagement and Museums, Newcastle Delegate. 2 April 2008
- Countryside and Community Research Institute, Cheltenham. Launch. Participant. 22 April 2008
- Gloucester University - University Court, Cheltenham. Seminar. Participant. 23 April 2008
- HEAC - Controversial Topics: Representation, Interpretation, Teaching, Manchester. Delegate. 30 April 2008
- Forestry Commission - England's Trees, Woods and Forests, Birmingham. Delegate. 1 May 2008
- Gardens as Everyday Culture Conference. Frankfurt. Speaker. 23 May 2008
- Patrimoine et Développement Durable: Une question d'éducation? Conference, Paris. Speaker. 17 June 2008
- Global Conference: 'Governing shared resources: connecting local experience to global challenges', Gloucester. Speaker. 16 July 2008
- European Heritage Days. Press Conference, Brussels. Presenter. 25 September 2008
- Green Space Forum - Reaching Out Conference, Reading. Speaker. 27 September 2008
- RTPi Update on Approaches to Open Space. London. Speaker. 2 October 2008
- NCVO/Carnegie 'Enquiry into the future of civil society - intergenerational connections', London. Seminar. Participant. 20 October 2008
- Council of Europe - European Heritage Forum, Brussels. Conference. Speaker. 22-24 October 2008
- English Heritage - Heritage Counts 2008, London. Publication launch. Delegate. 30 October 2008
- NCVO/Guardian 3rd Sector Networking Breakfast, London. Seminar. Participant. 5 November 2008
- NCVYS Green Means Go, London. Conference. Speaker. 5 November 2008
- Historic Houses Association AGM, London. Delegate. 11 November 2008
- Federation of City Farms & Community Gardens Conference, Wrexham. Delegate. 19 November 2008
- Natural England - Draft Access Policy workshop, London. Consultation. Participant. 21 November 2008
- Carnegie UK/NEG - Inquiry into the future of civil society, London. Round table discussion. Participant. 24 November 2008
- Society for Research into Higher Education Annual Conference, Liverpool. Speaker. 10 December 2008
- One Wales: One Planet. WAG Interactive Consultation Event, Llandudno. 14 December 2008
- National Audit Office/English Heritage Workshop, London. Consultation. Participant. 18 February 2009
- Environment Agency Diversity Planning Day. Birmingham. Speaker. 11 February 2009
- Civic Trust – Paving the Way, Harrogate. Speaker. 7 March 2009
- Barnet Council for Voluntary Action, London. Conference. Speaker. 26 March 2009.

## Consultations and Associations

BEN is recognised as an important player in the field within the historic, environmental and voluntary sectors. Requests come in for advice, input into consultation papers, policy documents and of course generally working and thinking together.

Through the year we have worked with many organisations and individuals including:

- Baring Foundation
- Bassac

- Bat Conservation Trust
- Birkbeck College London
- Brecon Beacons National Park
- Brot Urba, Spain
- BTCV
- Butterfly Conservation
- CABE
- Civic Trust
- CIWEM
- Coleg Menai Bangor
- Communities First Morriston and Clase
- Communities First Pwllheli South
- Conwy Borough Council
- Council for National Parks
- Countryside Council for Wales
- DCMS
- DCMS Engaging Places
- DEFRA
- Encams
- English Heritage
- Environment Agency Wales
- Environmental Law Foundation
- Equality and Human Rights Commission
- Federation of City Farms and Community Gardens
- Forestry Commission
- Groundwork
- Gwynedd Council
- HDRA
- Heritage Link
- Historic Houses Association
- Historic Scotland
- Institute for Archaeology
- LC2 Swansea
- Mantell Gwynedd
- MERCi
- Minorities of Europe
- Moelyci Environmental Centre
- Museums Galleries Scotland
- National Trust
- National Library of Scotland
- NIACE
- North Wales Chinese Women's Society
- North Wales Police
- North Wales Race Equality Network

- North West Wales Outdoor Partnership
- NWWT
- Platform
- Polish Housing Society, Pwllheli
- Ramblers Association
- Red Rose Forest Network
- RSA
- RSPB
- Scottish Natural Heritage
- MLA South East
- Snowdonia National Park Authority
- Snowdonia Society
- Stiftung Interkultur, Germany
- Sustrans
- Swansea City Council
- The Association of Wildlife Trusts
- Trawllyn Primary School
- Undercurrents
- University of Gloucestershire
- University of Manchester
- WLA Play
- Women's Environmental Network
- Woodland Trust
- Woodville Resource Centre, Black Health Forum
- Yorkshire Wildlife Trust

#### **Ethnic Minorities Award Scheme**

A small grant scheme for innovative projects integrating social, cultural and environmental concerns. Plus a signposting service to grants and resources.

#### **The BEN Network Conference**

The BEN Network Conference has won a significant place in the environmental calendar. It is run to enable Network members from across the UK to make links face to face. It works towards increasing the skills through sharing experience and running workshops with themes nominated by Network members. It highlights current issues and developmental themes.

*See the programme highlights in the Appendix*

## **Influencing and developing policy**

BEN contributes to policy, research and the highlighting of issues relevant to ethnic environmental participation through participation on key committees, advisory groups and campaigns, and input into consultations and working on policy development in association with others.

### *Advisory Groups:*

#### **England**

- Advisory Panel for the Centre for Active Learning (University of Gloucester)
- CIWEM Editorial Board
- Council for British Archaeology (CBA) Diversity Working Group
- DCMS - Social Inclusion Policy Committee
- DCMS Engaging Places National Advisory Groups
- DCMS Heritage Forum
- DCMS Historic Environment Review Executive Committee (HEREC)
- DEFRA Race Equality Scrutiny and Advisory Group
- DEFRA Sustainable Development Strategy Informal Advisory Group
- Diversity and Environmental Equality Network
- Food & Sustainable Communities Consortium
- HEREK Broadening Access Group
- Heritage Link Social Inclusion Working Group
- LSDC - Education for Sustainable Development Advisory Group
- MAB Urban Forum
- CCRI Board of Directors
- Young Archaeologists Club (YAC) Executive Committee

#### **Wales**

- Climate Change Commission for Wales Communications Sub-group (WAG)
- Communities First Grangetown/Butetown, Cardiff
- Communities First Pwllheli South

- Communities First Swansea Castle Ward - inclusion/ communications Environment Group
- Communities First Swansea – Morriston area
- Countryside Council for Wales Race Equality Focus Group
- Cross Sector Climate Change Group (WAG)
- Environmental Strategy Reference Group (WAG)
- Gwynedd Chinese Health Group
- Healthy Living Programme

#### **Scotland**

- Edinburgh Lothian Regional Environmental Education Forum (ELREEF)
- Environmental Volunteering Implementation Strategy Forum
- Glasgow Access Museums Panel
- Historic Scotland Advisory Group
- National Library of Scotland Advisory Group
- Scottish Executive Biodiversity Strategy Forum
- Scottish Landscape Forum
- Scottish Museums Council National Access and Learning Steering Group (SMC)

#### **UK**

- Sustainable Development Commission - Informal Forum

#### **International**

- IUCN/WCPA Task Force for Cities and Protected Areas

#### **Campaigns**

- Campaign to End Food Poverty
- Every Action Counts
- Get Fair
- Learning Outside the Classroom
- Local Works (Sustainable Communities Act)

## Consultancy and Training

BEN provides training, and consultancy, providing advice and a support service to enable organisational personnel to work effectively with ethnic communities.

### *Training:*

Built around the body of knowledge relating to ethnic environmental participation, it is constantly being developed.

- We offer training tailored to the needs of the client organisation re working effectively with ethnic groups.
- We offer themed modules of training relating to working with ethnic groups.
- We also offer training related to building the capacity of ethnic groups

### *Consultancy services offered include:*

- Advice as needed, e.g. Advice on publicity and publications, working with ethnic groups
- Research
- Development of policy and strategy
- Outline development of pilot projects
- Facilitation to enable partnership between environmental agencies and ethnic groups
- Identifying target ethnic groups for new audience development
- Focus groups
- Participatory evaluation
- Developmental support for organisational personnel
- Development of socially and culturally relevant activities or projects to involve ethnic groups
- Building up working relationships between environmental agencies and ethnic communities in order
- Vetting press releases or articles relating to ethnic groups

### *Our clients have included:*

Greenpeace, Woodlands Trust, Royal Parks, RSPB, Plantlife, Environment Agency, Countryside Council

for Wales, Cardiff County Council, City and County of Swansea, City of Edinburgh Council, Scottish Natural Heritage, Groundwork, Bristol City Council, Northamptonshire Countryside Services, BTCV, National Trust, Yorkshire Wildlife Trust, Milton Keynes Council, Red Rose Forest, University of Gloucestershire, Environment Centre Swansea.

## Projects in England

Projects in England continue to strengthen the capacity of ethnic communities to benefit from and contribute to the built and natural environment.

The Manchester Ethnic Environmental Participation Capacity Building Project is in its final year, consolidating work with groups across the range of themes and supporting providers in acquiring skills. We are continually assessing the opportunities for developing projects in other regions.

### *The England Good Practice Project*

Continue to capture and share good practice through the publication of good practice case studies

## Projects in Wales

The BEN Wales Programme works to develop ethnic environmental participation in Wales in various contexts with key themes such as nature conservation, recycling, environmental awareness and linking to educational and employment opportunities.

*The South Wales Project* focuses on Swansea, Cardiff, and Newport. It works across a number of themes including promoting environmental awareness and understanding, reducing and reusing resources enabling contact with nature and acting to protect nature, access to green spaces.

*Swansea Recycle Bike Project.* This innovative project continues to re-condition used unwanted bicycles and provide them to asylum seekers and

refugees and other members of the local community at low cost or in exchange for volunteering. It contributes to sustainability through promoting low energy transport and enabling participants to have increased social contact and to access local green space for health and wellbeing. The BEN Recycle Bike Project offers specific training in bike mechanics, bike safety checks for young people, and a Dr Bike safety and maintenance service delivered to schools and other organisations in the Swansea area.

*The North Wales Project* focuses on north west Wales, working with ethnic minorities across a range of environmental themes. This project is particularly significant in developing methodology for enabling ethnic environmental participation in a semi-rural and rural context, linking to their life concerns. Groundbreaking work done by this project include reaching out to new European minorities such as the Polish.

*The Wales Good Practice Project* – shares the good practice models from the development projects and works with environmental organisations and other partners to improve their equality procedures and practices.

### **The Scope of the Developmental Projects in Wales**

The overall programme of projects aim:

- To reach out to new groups in ethnic communities in order to stimulate awareness in sustainable development
- To support sustainable development projects undertaken by ethnic groups engaged in environmental participation. This includes project formulation, which integrates the cultural and social concerns of ethnic groups with environmental concerns, and accessing funds and expertise.
- To provide an information and advice service on sustainable development

- To continue to build up the interface between ethnic groups and the environmental sector,
- thereby putting into place active local networks facilitating ethnic environmental participation
- To engage ethnic groups in the evaluation of the work done and to consult them in order to jointly forge directions for further development
- To document and share innovative approaches, research and good practice developed by the projects

*The work includes:*

- Intensive outreach work into ethnic communities to build initial relationships and mutual understanding.
- Identifying the needs and areas of interest specific to particular ethnic groups and developing opportunities for engaging with the themes of sustainable development.
- Enabling access to contact with nature, especially the countryside, by inner city ethnic groups, thereby impacting on their quality of life.
- Working creatively with ethnic groups to enable them to put together innovative environmental projects which also address their social and cultural needs
- Assessing the needs of ethnic groups in relation to capacity building.
- Work with asylum seekers and refugees
- Exploring and promoting opportunities for ethnic minorities to enter employment in the environmental sector
- Exploring and promoting links to educational opportunities stemming from interest and involvement in environmental activities
- Developing and organising training events for environmental organisations to enable them to gain skills in working with ethnic groups
- Consultation of ethnic groups to evaluate progress and identify emerging needs and concerns.
- Building up a local and national network.

## Projects in Scotland

The national project aims to enable ethnic groups to access the historic and natural heritage of Scotland, supporting provider organisations and ethnic communities to come together.

*The BEN Discover Heritage Project* has enabled significant numbers of community groups have visited heritage sites in Scotland, giving them a first taste of what the sector can offer, and building partnerships with site owners. The project has built an understanding of the heritage shared by ethnic groups and Scotland's history. Training has also been undertaken to support provider organisations to gain awareness and skills to work in a socially and culturally relevant way.

*The Scotland Good Practice Project* continues to capture and share good practice through the publication of good practice case studies.

## Summary of BEN Projects

### 08/09 BEN Projects

#### *UK*

- EMAS (Ethnic Minorities Award Scheme)

#### *England*

- Ethnic Environmental Participation Capacity Building Project. Manchester
- BEN England Good Practice Project

#### *Wales*

- The South Wales Access Project
- The Recycle Bike Project
- The North Wales Access Project
- BEN Wales Good Practice Project

#### *Scotland*

- The BEN Discover Heritage Project
- The BEN Scotland Good Practice Project

### Partnership Projects

#### *Wales*

- National Trust SMAI Project

### Research Projects

Research with the Centre for Active Learning, University of Gloucestershire: 'My Door is Always Open - Addressing improvement of learning quality for international and ethnic minority students studying courses related to the environment at university'

### 09/10 BEN Projects

#### *UK*

- EMAS (Ethnic Minorities Award Scheme)

#### *England*

- Rainbow Project

#### *Wales*

- The South Wales Access Project
- The Recycle Bike Project
- The North Wales Access Project

## Highlights from the BEN Network Conferences 2008/09

### The BEN Network Conferences

The BEN Network Conferences are working conferences which rotate across the country. They have taken place in Birmingham, Luton, Leicester, Newcastle, London, Edinburgh and Bristol. They are held with the aim of:

- Providing a focus for ethnic community environmental participation
- Project sharing
- Drawing together different fields of work under the theme of environment in order to stimulate integrated socio-cultural-environmental projects
- Creating opportunities for national and international networking and partnership
- Facilitation networking for expertise, information and partnership
- Raising issues of needs and concerns
- Attending to the development of knowledge and skills of network members through running workshops with themes nominated by the BEN Network

### **Manchester Conference Thursday 5<sup>th</sup> March**

**Keynote Speech: Capacity building for ethnic communities and environmental organisations** Judy Ling Wong CBE. Director BEN

1. **Green Streets - nurturing local community pride.** *Pete Stringer. Red Rose Forest*
2. **Heritage and identity - Manchester Museum.** *Dominique Tessier*
3. **Whose Story? Project - Roots to Youts and Caribbean Herbal at Wightwick Manor.** *Glenis Williams, Joyce Wallace. National Trust*
4. **Engaging ethnic communities in a rural context.** *Philippa Owen. BEN North Wales*
5. **Working with BME communities in the North West.** *Saleem Oppal. BEN Manchester w*
6. **Building capacity and supporting the Gypsy and Traveller Community.** *Jan Beaumont. North West Planning Aid*
7. **The National Environmental Framework for Schools.** *Lydia Meryll. Sustainable Schools North West*
8. **Count Bat Project in Queens Park: a model for engaging volunteers from culturally diverse groups in bat conservation.** *Jude Hirstwood. Bedfordshire Bat Group w*
9. **Linking projects in the North West and Bangladesh.** *Ruhel Ahmed. Just Help Foundation*
10. **Big Lottery funding and Changing Spaces.** *Sharon Jones, Wil Woan. Big Lottery Fund w*
11. **Engaging BME communities in the wider countryside.** *Zohra Mahmood. CSV Environment w*
12. **Personal pledges for green action.** *Lucy Jaffe. Every Action Counts*
13. **The Otesha Project UK - Cycling Theatre Troublemakers are coming your way!** *Hanna Thomas. The Otesha Project w*
14. **Recycle and keep cycling: BEN developments in Swansea.** *Amina Ali. Anthony Nicholls. BEN Swansea*

15. **Manningham Women on Wheels - our story about cycling.** *Viv Carnea. CTC*
16. **Urban discovery in Hammersmith & Fulham.** *Moya O'Hara, Jo MacMenamin. Hammersmith & Fulham Urban Studies Centre*
17. **Oxfam's approach to addressing poverty and inequality in the UK.** *Kirit Patel. Oxfam w*
18. **Building capacity in the Sudanese community.** *Daniel Yupet. New Tree Aid Sudan*
19. **Partnership working in Manchester.** *Sylvia Sham. Wai Yin Chinese Women's Society*
20. **Dales experience - working with communities to increase visits to the Yorkshire Dales National Park.** *Catherine Kemp. Yorkshire Dales National Park Authority*
21. **Learning in Limestone Country.** *Judy Rogers. Yorkshire Dales Millennium Trust*

### **Wales Conference March 18<sup>th</sup>**

#### **Keynote Speech Capacity building for ethnic communities and environmental organisations in Wales**

Judy Ling Wong CBE. Director BEN

1. **Supporting and stimulating community action for climate change; a Welsh Assembly Government perspective.** *Usha Ladwa-Thomas. WAG*
2. **Selling Recycling to the wider community.** *Trish Flint. City & County of Swansea*
3. **BEN developments in Swansea.** *Amina Ali. Anthony Nicholls. BEN Swansea w*
4. **Is recycling a waste of time?** *Phil Hurst. Cylch*
5. **Social Enterprise and its environmental impact.** *Faisal M Hashi. Development Trusts Association*
6. **Loan Finance for voluntary organisations.** *Ian Alexander. Charity Bank w*
7. **Volunteering opportunities in the sector.** *Miki Miyata-Lee. Countryside Council for Wales and Clare Parsons. Brecon Beacons National Park w*
8. **Mentor Allan Newport - 2 years on.** *Leon Burns. South East Wales Race Equality Council*
9. **Giving ethnic minorities a voice in landuse planning.** *Allan Archer. Planning Aid Wales*
10. **Nordic Walking for health.** *Liz Morris. Age Concern w*
11. **Woodlands for Learning.** *Amy Phillips. Forestry Commission Wales*
12. **Unity in the community.** *Sue Reed. City & County of Swansea*
13. **Working with the African Community Centre in Swansea.** *Uzo Iwobi. African Community Centre*
14. **EYST visit to Centre for Alternative Technology.** *Rocio Cifuentes EYST. Ethnic Youth Support Team*
15. **Engaging ethnic communities in a rural context.** *Philippa Owen. BEN North Wales*
16. **Chinese Walk Leader training in North Wales.** *Shana Thomas. Sports Council for Wales*
17. **Protecting marine life with the MSC.** *Gill Bell. Marine Conservation Trust*
18. **Sculpture by the Sea UK Festival 2009.** *Sarah Holden. Sculpture by the Sea w*
19. **Sustainable Swansea Digital Media Project.** *Kathryn Tate. Sustainable Swansea w*
20. **Count bats in Wales with us!** *Steve Lucas. Bat Conservation Trust*
21. **Anti poverty /social inclusion youth quiz.** *Mary Sherwood. City & County of Swansea w*

*W denotes workshop*

Statement of Financial activities for the year ended 31<sup>st</sup> March 2008

	Unrestricted funds £	Restricted funds £	Total 2008 £	Total 2007 £
<b><i>Incoming resources</i></b>				
<b>Incoming resources from generated funds:</b>				
Voluntary income	225	473,358	258,791	473,583
Activities for generating funds	66,891	689	56,223	67,580
Investment income	1,098	-	1,151	1098
<b>Total incoming resources</b>	<b>68,214</b>	<b>474,047</b>	<b>316,165</b>	<b>542,261</b>
<b><i>Resources expended</i></b>				
<b>Cost of generating funds</b>				
Costs of generating voluntary income	109,014	470,746	355,910	579,760
<b>Charitable activities</b>				
Management & other charges	167	13,431	12,226	13598
Bank charges payable	164	-	491	164
Grants paid	-	2,804	1,131	2,804
<b>Governance costs</b>	<b>3,844</b>	<b>12,006</b>	<b>4,939</b>	<b>15,850</b>
<b>Total resources expended</b>	<b>113,189</b>	<b>498,987</b>	<b>374,697</b>	<b>612,176</b>
<b><i>Net Incoming/(Outgoing) resources before transfers</i></b>	<b>(44,975)</b>	<b>(24,940)</b>	<b>(58,532)</b>	<b>(69,915)</b>
<b>Gross transfer between funds</b>	<b>(28,692)</b>	<b>28,692</b>	<b>-</b>	<b>-</b>
<b>Net incoming/(outgoing) resources</b>	<b>(73,667)</b>	<b>3,752</b>	<b>(58,532)</b>	<b>(69,915)</b>
<b><i>Reconciliation of funds</i></b>				
<b>Total funds brought forward</b>	<b>116,584</b>	<b>12,784</b>	<b>59,453</b>	<b>129,368</b>
<b>Total funds carried forward</b>	<b>42,917</b>	<b>16,536</b>	<b>921</b>	<b>59,453</b>

**Balance Sheet**  
**At 31<sup>st</sup> March 2008**

	Unrestricted funds £	Restricted funds £	31.3.08 Total Funds £	31.3.07 Total Funds £
<b>Fixed assets</b>				
Tangible assets	1,462	-	1,462	2,924
<b>Current Assets</b>				
Debtors	-	99,301	99,301	259,032
Cash at bank	41,456	(14,300)	27,156	14,032
	41,456	85,001	126,457	273,064
<b>Creditors</b>				
Amounts falling due within one year	-	(68,466)	(48,466)	(146,620)
<b>Net current assets</b>	41,456	16,535	57,991	126,444
<b>Total assets less current liabilities</b>	42,918	16,535	59,453	129,368
<b>Net assets</b>	42,918	16,535	59,453	129,368
<b>Funds</b>				
Unrestricted funds			42,918	116,584
Restricted funds			16,535	12,784
<b>Total Funds</b>			59,453	129,368

These financial statements have been prepared in accordance with the special provisions of Part VII of the Companies Act 1985 relating to small charitable companies and with the Financial Report Standard for Smaller Entities (effective January 2007).

**NB:** The full accounts are available on request or from our website.



*Working for full ethnic participation  
in the built and natural environment*

Black Environment Network is supported by:

Big Lottery Fund  
CIST Gwynedd  
Countryside Council for Wales  
Environment Wales  
Esmee Fairbairn Foundation

Greenpeace Environmental Trust  
National Library of Scotland  
National Trust (England and Wales)  
Snowdonia National Park Authority  
Sports Council Wales

Black Environment Network. UK Office. 60 High St. Llanberis. Wales LL55 4EU  
Tel/Fax 01286 870715 ukoffice@ben-network.org.uk www.ben-network.org.uk  
Registered Charity No. 1048390 Company Ltd No. 3063864